

-SONNY ROLLINS

OLED

(UP)

AB \flat 6

G-7

C-7

F7

B \flat 6

G7

C-7

F7



F-7

B \flat 7E \flat mi \flat 7E \flat -6

D-7

G7

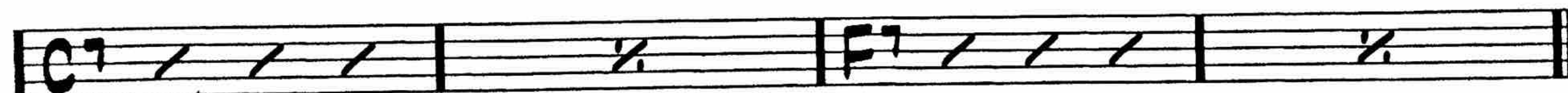
1. C-7

F7



2. C-7

F7

B \flat 6**B****A**B \flat 6

G-7

C-7

F7

B \flat 6

G7

C-7

F7



F-7

B \flat 7E \flat mi \flat 7E \flat -6

D-7

G7

C-7

F7

B \flat 6

FINE

(UP)

OLED

A

G^b E-7 A-7 D⁷ G^b E⁷ A-7 D⁷

Musical staff with notes and chords for the first part of section A. The notes are: G^b (quarter), E⁻⁷ (quarter), A⁻⁷ (quarter), D⁷ (quarter), G^b (quarter), E⁷ (quarter), A⁻⁷ (quarter), D⁷ (quarter).

D-7 G⁷ Cmaj⁷ C-^b B-7 E⁷ A-7 D⁷

Musical staff with notes and chords for the second part of section A. The notes are: D⁻⁷ (quarter), G⁷ (quarter), Cmaj⁷ (quarter), C-^b (quarter), B-7 (quarter), E⁷ (quarter), A-7 (quarter), D⁷ (quarter).

2. A-7 D⁷ G^b **B**

Musical staff with notes and chords for the second ending of section A. The notes are: A-7 (quarter), D⁷ (quarter), G^b (quarter). The rest of the staff contains rests and slash marks.

Musical staff with notes and chords for the first ending of section B. The notes are: A⁷ (quarter), D⁷ (quarter), G^b (quarter).

A

G^b E-7 A-7 D⁷ G^b E⁷ A-7 D⁷

Musical staff with notes and chords for the first part of section A. The notes are: G^b (quarter), E⁻⁷ (quarter), A⁻⁷ (quarter), D⁷ (quarter), G^b (quarter), E⁷ (quarter), A⁻⁷ (quarter), D⁷ (quarter).

D-7 G⁷ Cmaj⁷ C-^b B-7 E⁷ A-7 D⁷ G^b

Musical staff with notes and chords for the second part of section A. The notes are: D⁻⁷ (quarter), G⁷ (quarter), Cmaj⁷ (quarter), C-^b (quarter), B-7 (quarter), E⁷ (quarter), A-7 (quarter), D⁷ (quarter), G^b (quarter).

FINE

Four empty musical staves at the bottom of the page.

OLEO

- SONNY ROLLINS

(UP)

A

B^b6

G-7

C-7

F7

B^b6

G7

C-7

F7

F-7

B^b7

E^bmaj7

E^b-6

D-7

G7

C-7

F7

² C-7 F7 B^b6 **B**

A

B^b6

G-7

C-7

F7

B^b6

G7

C-7

F7

F-7

B^b7

E^bmaj7

E^b-6

D-7

G7

C-7

F7

B^b6

FINE

OLEO

-SONNY ROLLINS

(UP)

A

C^b

A-7

D-7

G7

C^b

A7

D-7

G7



G-7

C7

Fmaj7

F-6

E-7

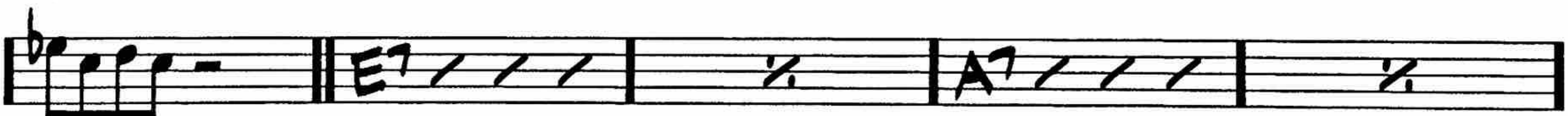
A7

D-7

G7

2. D-7 G7 C^b

B



A

C^b

A-7

D-7

G7

C^b

A7

D-7

G7



G-7

C7

Fmaj7

F-6

E-7

A7

D-7

G7

C^b

FINE