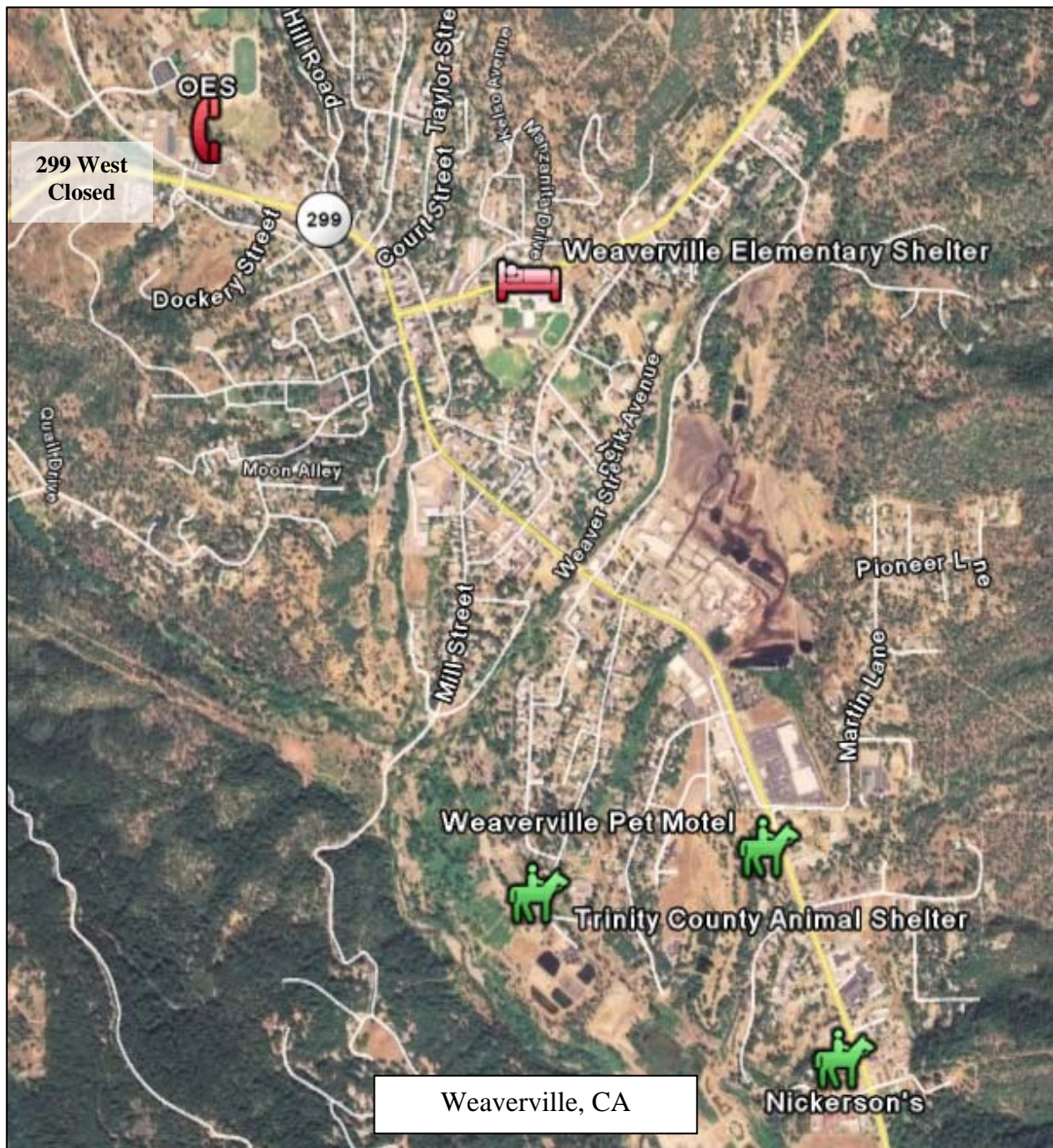


Trinity County Fire Evacuation Shelter Locations (As of June 26, 2008)



Emergency Shelter:

Weaverville Elementary School
Highway 3 (approximately ½ mile north of Highway 299)
(530)623-5533

Animal Shelters:

Trinity County Animal Shelter
End of Mountain View St.
(530) 623-1370

Nickerson Trinity Animal Hospital
31 Ponderosa Lane (Across from PUD)
(530)623-5757

Weaverville Pet Motel
1514 Highway 299 (Next Campora Propane)
(530) 623-0060

Travel Information:

Highway 299

- Closed 8 miles west of Weaverville to west bound traffic
- Closed at Big Bar to east bound traffic

Highway 3

- Closed 31 miles west of Red Bluff to west bound traffic
- Closed at Highway 3 to east bound traffic, except for one-way controlled traffic 9.4 miles east of Highway 3