

# RECLAMATION

*Managing Water in the West*

## 2016 Sacramento Temperature Management Planning Meeting

April 6, 2016



U.S. Department of the Interior  
Bureau of Reclamation

Estimated CVP Operations BASE 90% Exceedance

Storages

Federal End of the Month Storage/Elevation (TAF/Feet)

		Mar	Apr	May	Jun	Jul	Aug	Sep	Oct	Nov	Dec	Jan	Feb	
Trinity		854	1171	1350	1315	1242	1114	1035	964	950	939	942	971	1053
	Elev.	2273	2290	2287	2280	2267	2259	2251	2249	2248	2248	2248	2252	2261
Whiskeytown		207	206	238	238	238	238	230	206	206	206	206	206	206
	Elev.	1199	1209	1209	1209	1209	1209	1207	1199	1199	1199	1199	1199	1199
Shasta		2766	4044	4289	4330	4128	3756	3352	3032	2858	2723	2654	2788	3072
	Elev.	1049	1058	1059	1052	1039	1023	1009	1001	995	992	998	998	1011
Folsom		606	667	797	964	908	711	553	522	436	358	313	332	410
	Elev.	436	449	465	460	440	423	419	408	397	389	389	393	405
New Melones		459	567	568	572	548	494	445	402	392	410	427	444	462
	Elev.	871	872	872	868	856	846	835	833	837	841	845	849	849
San Luis		312	426	367	202	91	34	34	111	259	470	687	835	897
	Elev.	459	444	409	377	335	331	353	373	407	443	476	491	491
Total		7081	7809	7820	7155	6346	5659	5262	5102	5106	5228	5576	6099	

State End of the Month Reservoir Storage (TAF)

Oroville	Elev.	
San Luis		
Total San Luis (TAF)		

Monthly River Releases (TAF/cfs)

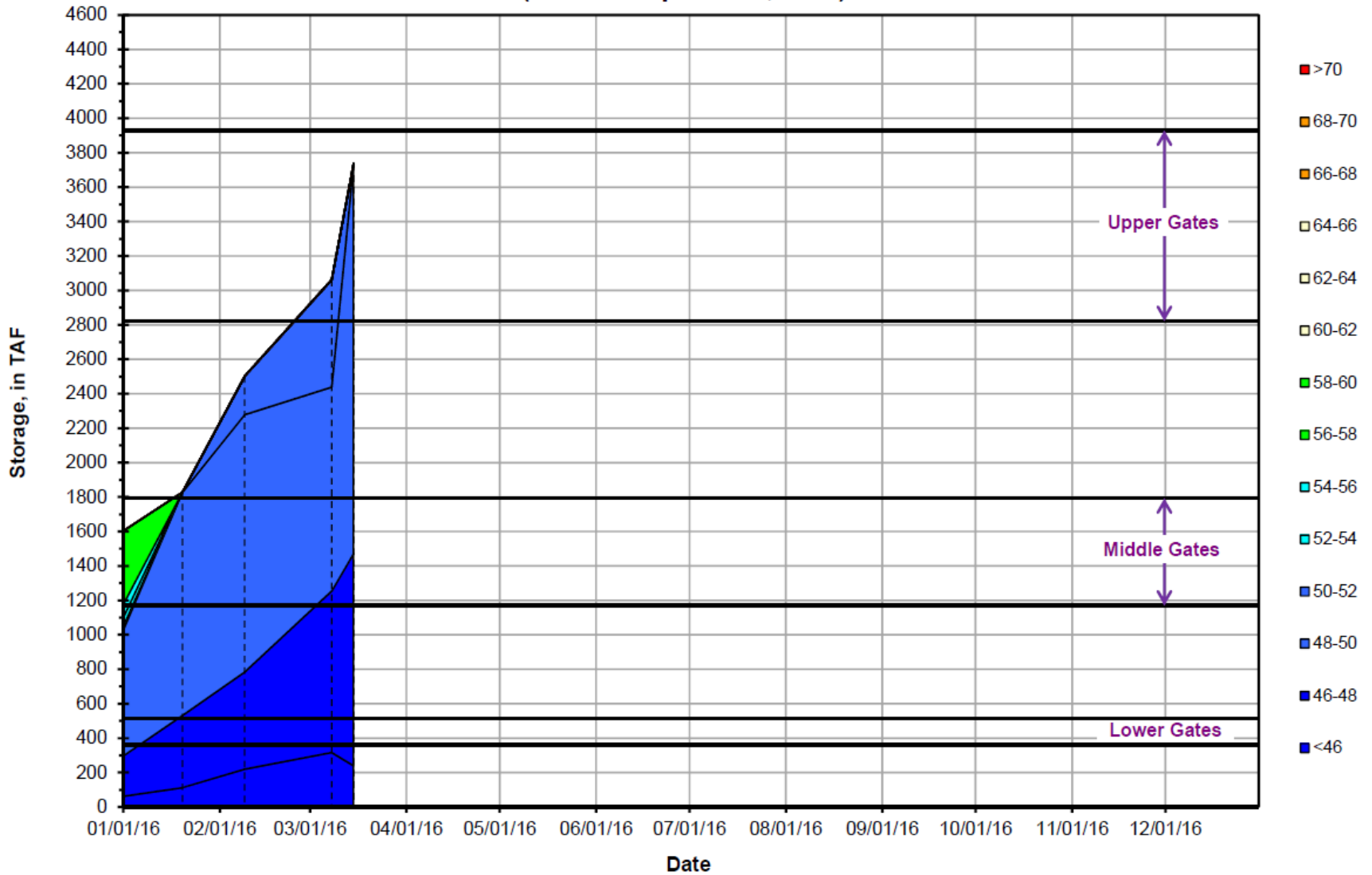
Trinity	TAF	18	32	260	150	68	45	44	23	18	18	18	17
	cfs	300	540	4,225	2,526	1,102	734	744	373	300	300	300	300
Clear Creek	TAF	11	13	13	9	7	5	9	14	10	11	11	10
	cfs	175	218	216	150	120	85	150	225	175	175	175	175
Sacramento	TAF	246	297	400	535	645	615	535	400	387	400	255	230
	cfs	4000	5000	6500	9000	10500	10000	9000	6500	6500	6500	4150	4150
American	TAF	599	208	215	274	289	245	115	121	118	108	92	83
	cfs	9750	3500	3500	4602	4702	3989	1928	1971	1981	1750	1500	1500
Stanislaus	TAF	12	27	25	9	9	9	9	35	12	12	12	12
	cfs	200	460	400	150	150	150	150	577	200	200	200	213
Feather	TAF												
	cfs												

Trinity Diversions (TAF)

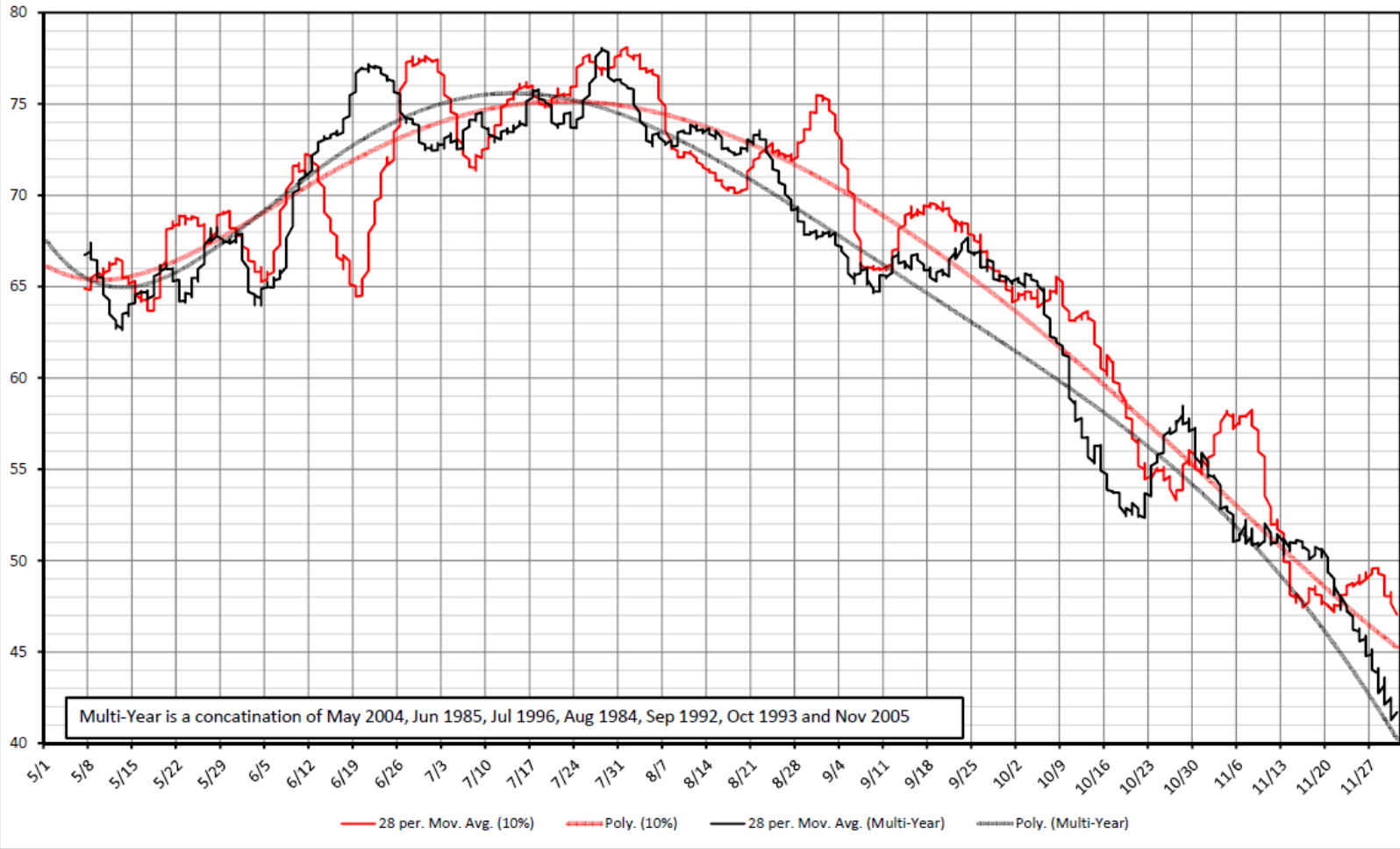
	Mar	Apr	May	Jun	Jul	Aug	Sep	Oct	Nov	Dec	Jan	Feb
Carr PP	13	38	37	77	83	37	32	0	14	19	6	5
Spring Crk. PP	28	8	30	70	75	30	30	12	5	12	3	7

RECLAMATION

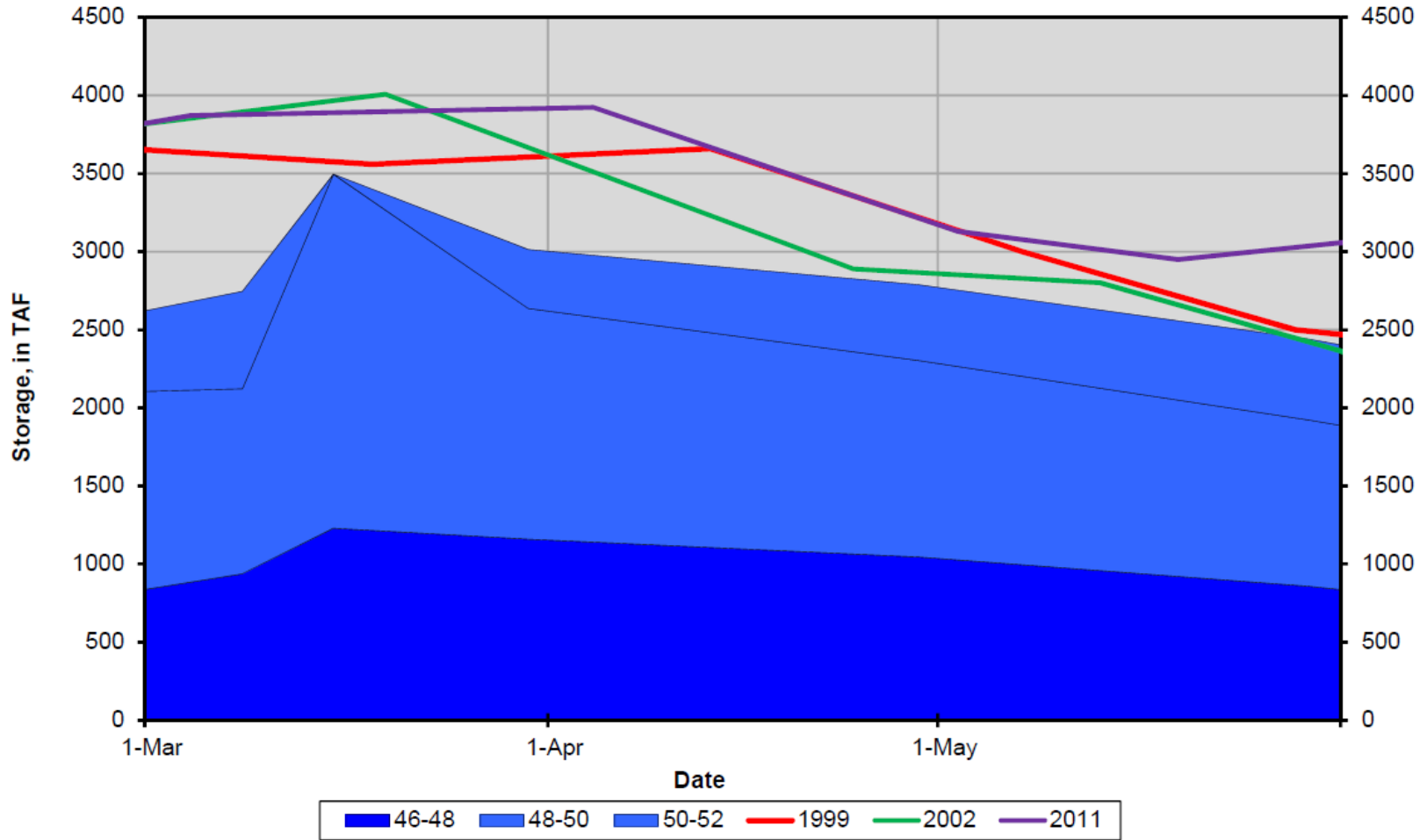
### Lake Shasta Isothermobaths - 2016 (Water Temperature, in °F)



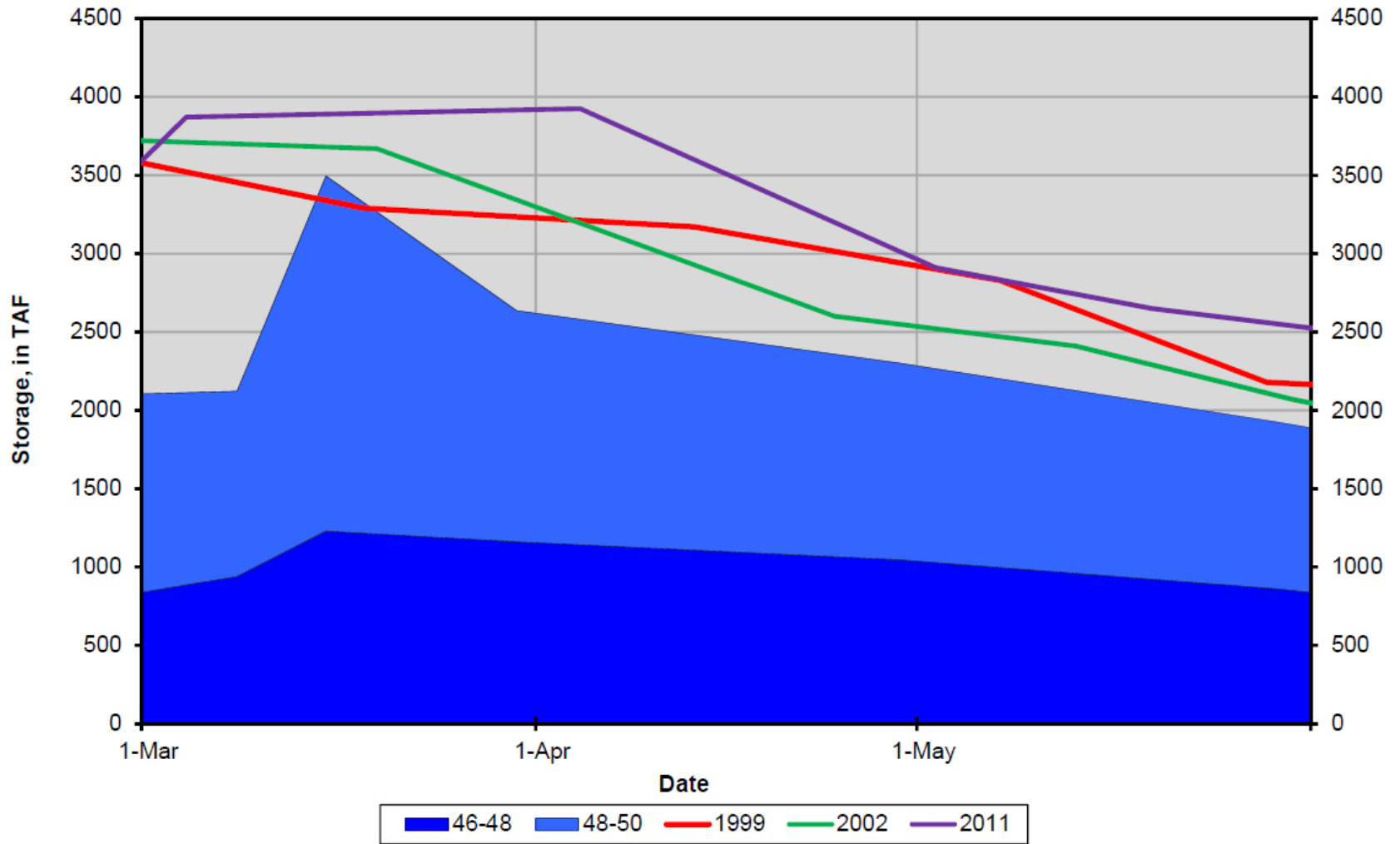
### 10% Historical Vs 2014 Simulation



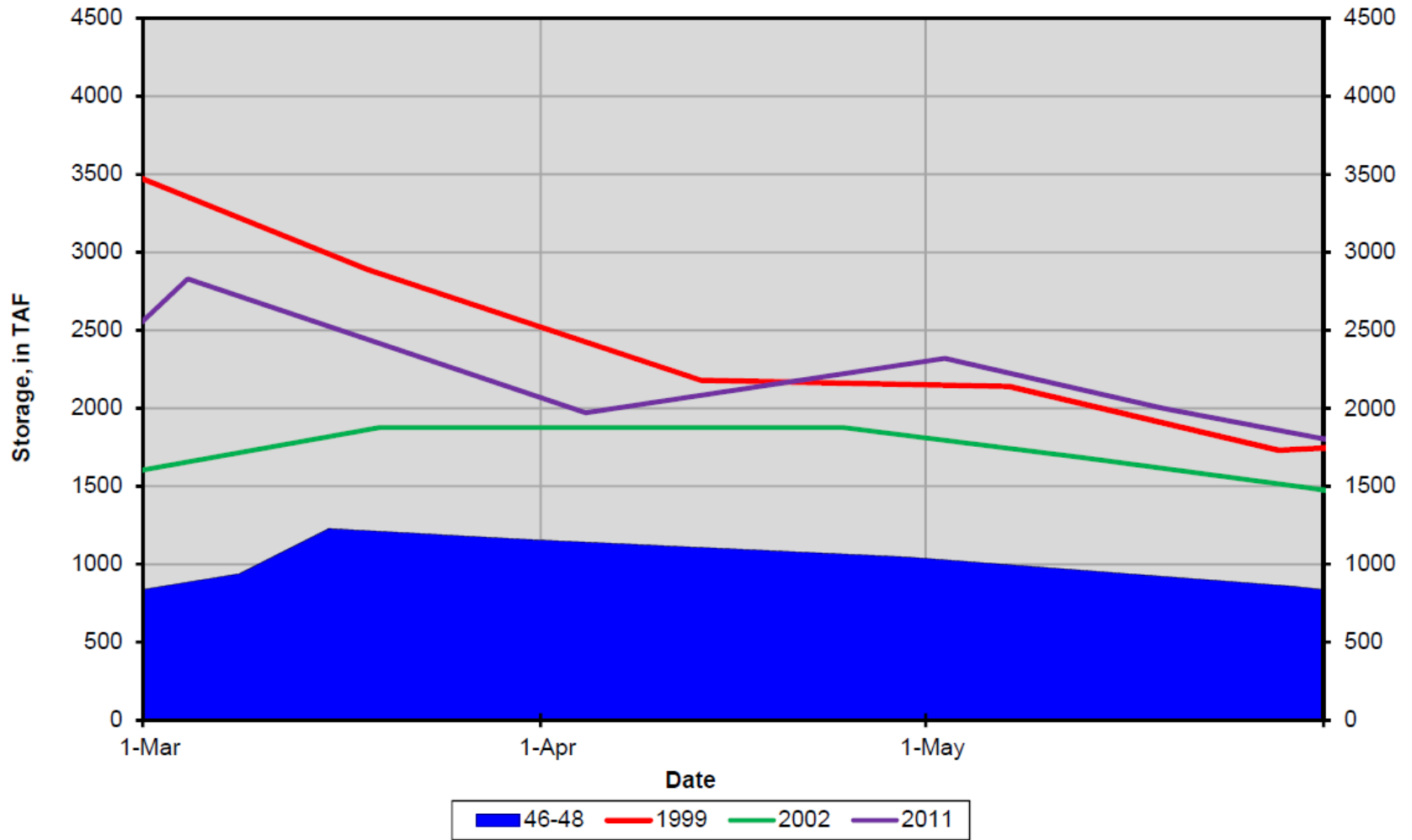
March 15th Model Run Vs Historic Data  
Spring Cold Water Storage less than or equal to 52 °F



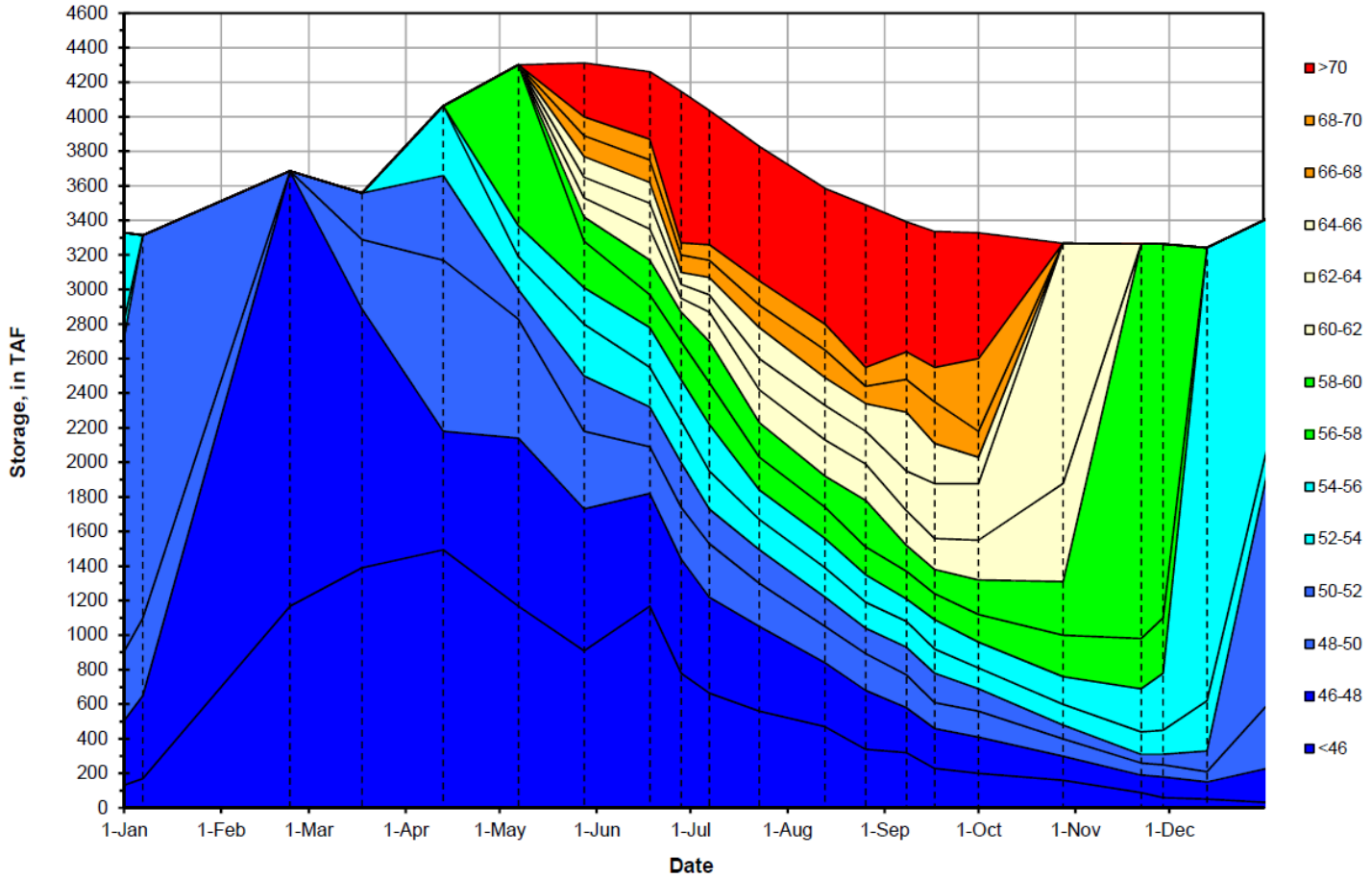
### March 15th Model Run Vs Historic Data Spring Cold Water Storage less than or equal to 50 °F



### March 15th Model Run Vs Historic Data Spring Cold Water Storage less than or equal to 48 °F

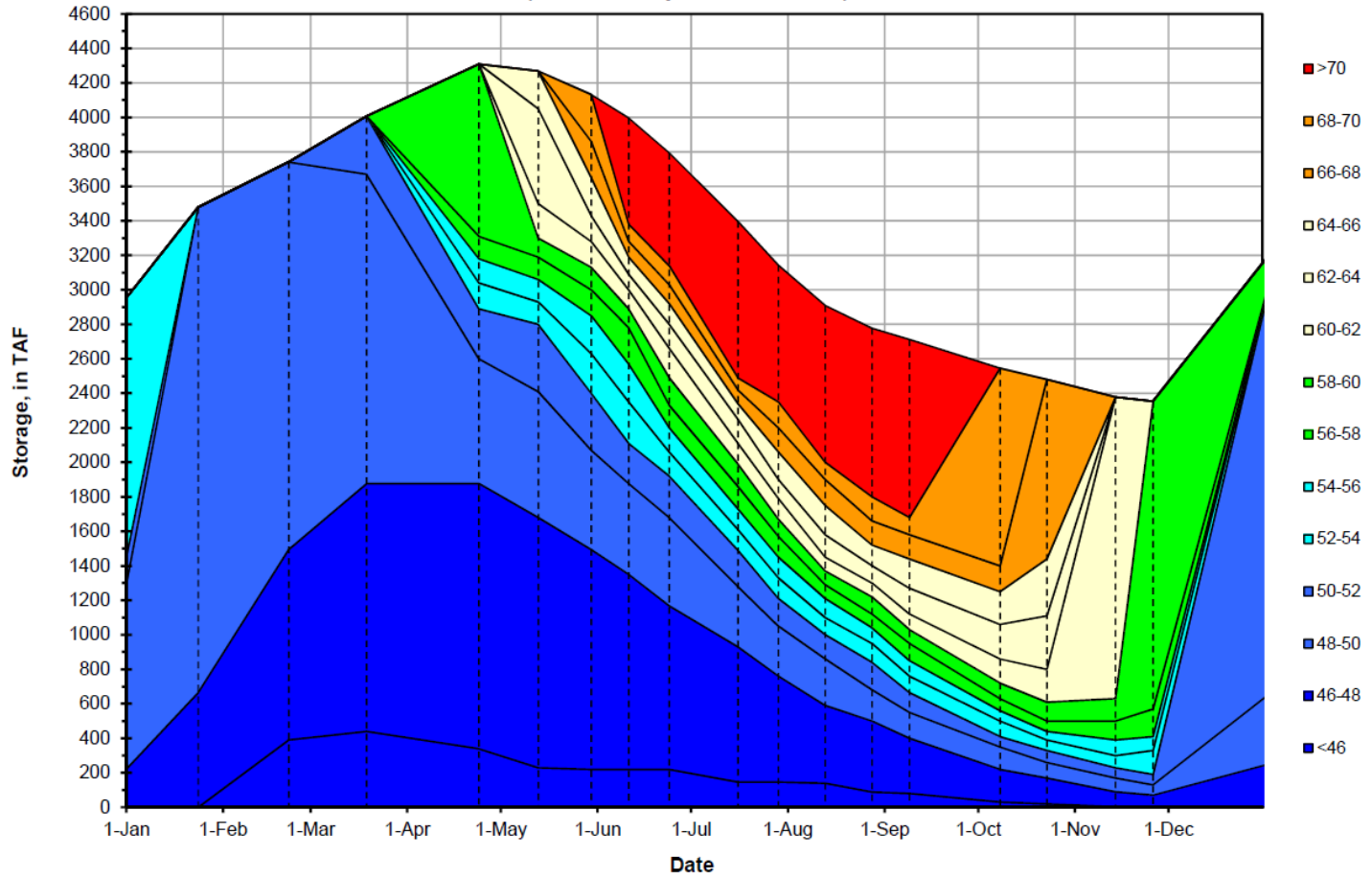


Lake Shasta Isothermobaths - 1999  
(Water Temperature, in °F)

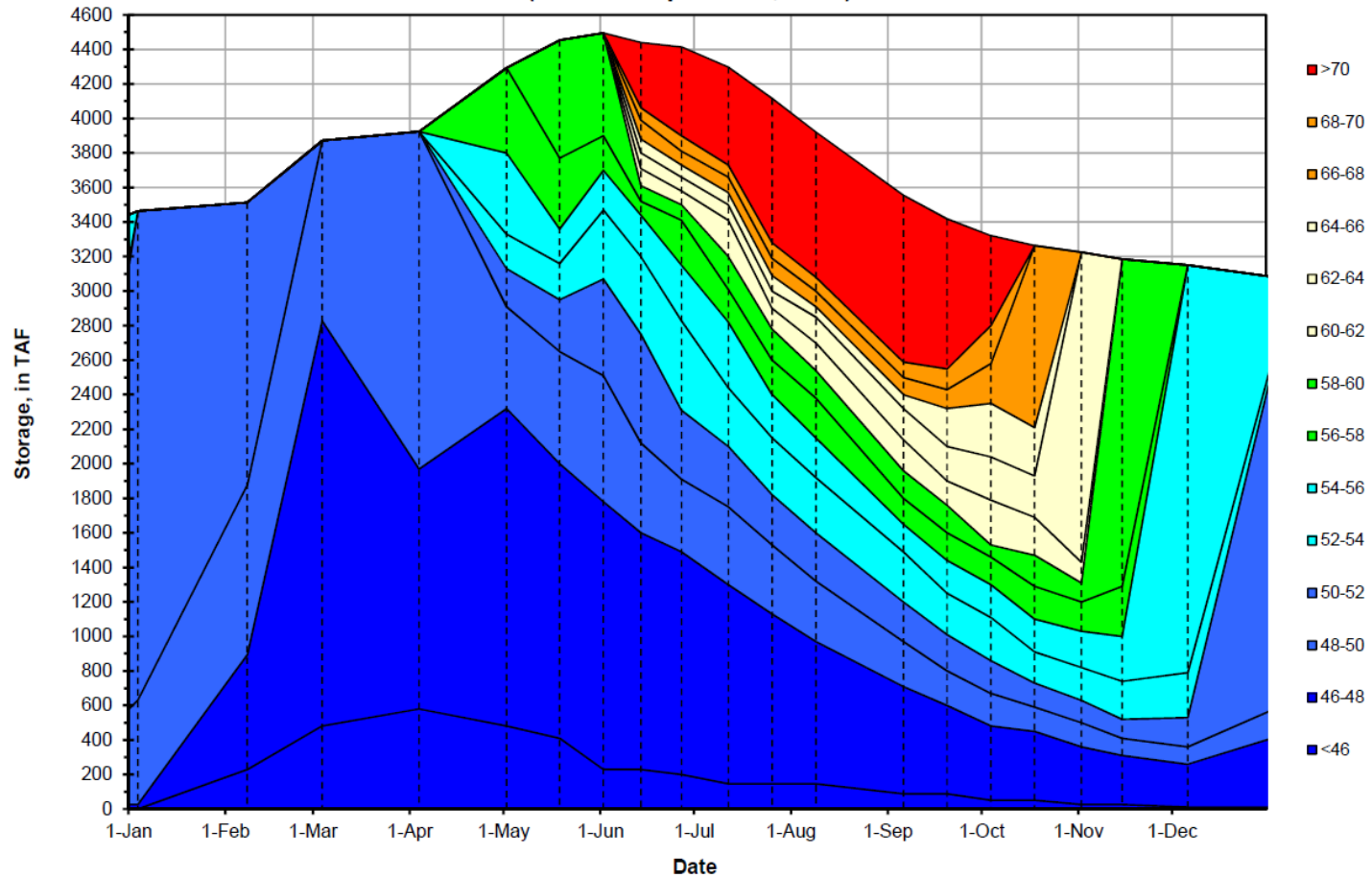




Lake Shasta Isothermobaths - 2002  
(Water Temperature, in °F)



Lake Shasta Isothermobaths - 2011  
(Water Temperature, in °F)



**Sacramento River Modeled Temperature  
2016 Mar 90%-Exceedance Water Outlook - 10% L3MTO Historical  
Approximately 52 degree at Kes**

67 Kes Releases: April at 5,000, May at 6,500, June at 9,000, July at 10,500, Aug at 10,000, Sept at 9,000,  
66 Oct - Nov at 6,500  
65 **EOM April storage: 4.3 MAF & EOM Sept storage: 3.0 MAF**  
64 Trinity profile date : 2/11/2016  
63 Whiskeytown profile date: 3/16/2016  
62 Shasta profile date: 3/15/2016  
61 10% Met - Exceedance: May '66, June '73, July '00, Aug '88, Sept '22, Oct '52 and Nov '62

*Temp Run date: March 17, 2016*

